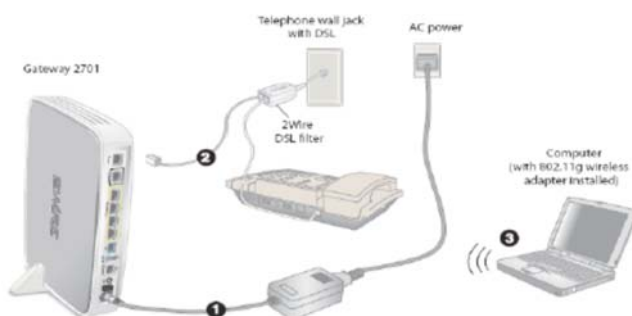


Configuring your WiFi to your mio Box

Congratulations on your successful installation of mio Box. You will find that the wireless setup on your mio Box is already complete and you may refer to this guide for setting up another computer or use this for future reference.

›Part A: Physical Setup and Connections

With a successful installation, your current physical set-up should look like the diagram below with:



- 1** Power Adapter connected to your mio Box.
- 2** DSL microfilter connected to your mio Box and Phone, and plugged into the telephone wall socket.
- 3** Notebook or Computer with Wireless PC Card/USB Adapter connected wirelessly to your mio Box.

›Part B: Your Network Name and Key

Your mio Box has default wireless security settings. Find the barcode on your mio Box with this diagram as a guide and take note of the two numerical codes which are your Network Name and Key.

You may fill in these details into the boxes below for future reference.

Network Name (SSID): 2WIRE_____
(Insert last 3 numbers of your Serial Number (SN) here, e.g. 110)

Network Key: _____
(Write in 10 digit key, located underneath the Serial Number, encased in square brackets.)

Note that the mio Box supports other wireless encryption options such as WPA but is default set to WEP to suit most customer equipment. You may refer to the manufacturer for instructions to change the encryption method.



›Configuring your Personal Computer for WiFi



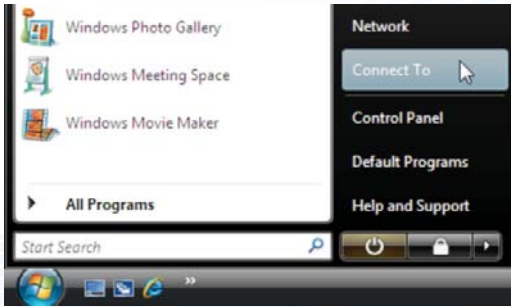
IMPORTANT!

You are required to own a wireless adapter (wireless PC card or wireless USB adapter) or wireless enabled Notebook before you can proceed to the next steps.

Please refer directly to Part:

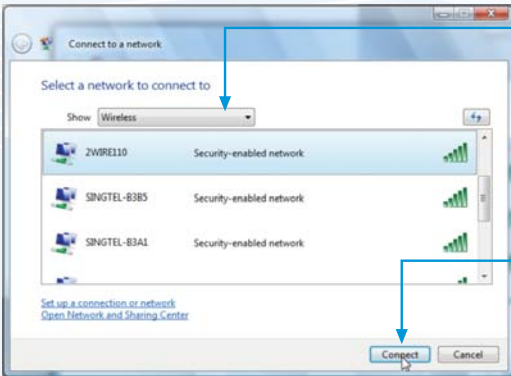
- C.** if you are using Windows XP
- D.** if you are using Windows Vista
- E.** if you are using another wireless manager other than Windows

›Part D: For Windows Vista Users



1 In Windows Vista, click on Start button.

2 Click on "Connect To".



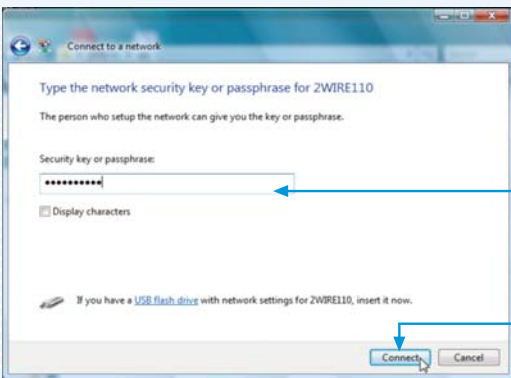
3 You will see the following screen. Under Show, select "Wireless".

4 Find the correct Network Name of your wireless network, e.g. 2WIRE110.

Note: Please refer to Part B if you are unsure of your Network Name or try refreshing your Network list if you do not see it.

5 Click on the "Connect" button.

6 Please wait while your computer tries to connect to the mio Box.



7 You will now be prompted to enter your Network Key.

Note: You will see this when:

(i) You are connecting to the mio Box for the first time

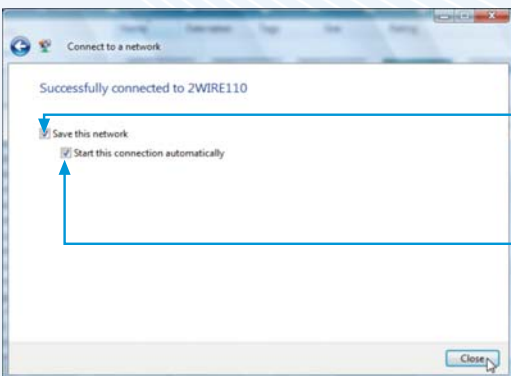
(ii) You had unselected the option to save the Network Key (WEP)

8 Type in your Network Key in the "Security key or passphrase" field.

Note: Please refer to Part B if you are unsure of your Network Key.

9 Click on "Connect" button.

10 Please wait while your computer authenticates with your wireless network.



11 Your wireless connection is successfully configured when you see this screen.

12 Make sure there is a check on "Save this network".

Note: This option will save your Network Key (WEP). If you do not enable this option, you will always be prompted to enter the key

13 Ensure that you have checked on "Start this connection automatically".

Note: This option will connect your computer to the mio Box automatically. If you do not enable this option, you will be required to manually connect to the wireless network.

14 You have successfully configured your wireless connection on Windows Vista.

15 Click on "Close" to exit the window.

Part E: For other Wireless Managers

Configuration of most Wireless Managers requires your Network Name and Key. Follow the below steps to configure this or refer to the user manual of your Wireless Adapter for advanced instructions.

1 Open up your default or preferred Wireless Manager.

2 Find the Network Name for your modem and double-click on it.

Note: Please refer to Part B if you are unsure of your Network Name or try refreshing your Network list if you do not see it.

3 Enter your Network Key when prompted.

Note: Please refer to Part B if you are unsure of your Network Key.

IMPORTANT TIPS:

- A) Ensure that all active telephone extensions are fixed with DSL microfilters for stable and reliable Internet experience. The 2Wire DSL microfilter can be seen in Part A - Physical Setup and Connections.
- B) Remember the Network Name (SSID) and the Network key of the wireless set-up. For more information, please refer to Part B - Your Network Key and Name. Please note that your Network Name (SSID) and Network Key may not be the same if you have changed your wireless settings.
- C) Please place the mio Box on a flat surface and ensure:
 - 1) It is not near blockades such as building structure, natural or artificial barriers.
 - 2) It is not kept in enclosed area that will affect signal coverage.
 - 3) It is not near electronic devices, including, but not limited to microwave ovens, Bluetooth devices, and cordless phones to reduce interference of same frequency.
 - 4) It is not near water containing equipment filled with water to optimise wireless signal.
- D) Note that the signal strength may vary or fail altogether due to above mentioned factors which are not within SingNet's control, SingNet shall not be liable for any loss or damage arising from such interference or failure. Customer shall be solely responsible for providing all equipments necessary such as repeaters, at its own cost, to extend wireless coverage beyond above mentioned limitations should the need arise.

Technical Hotlines

BroadBand:

1800 848 6933

Mon- Sun & Public Holidays: 8am- 12mn

mio:

1800 555 6000

Mon-Sun & Public Holidays: 8am- 12mn

Modem Technical Support Information

Malifax Technologies (S) Pte Ltd

Support Hotline: 6287 5033

Support E-Mail: support@malifax.com.sg

Address: 76 Playfair Road, LHK2 Building, Lobby 2, #06-03. Singapore (367996)

Service Centre Operating Hours

Monday ~ Friday (except Public Holidays) 9am ~ 7pm

Helpdesk Operating Hours

Monday ~ Friday (except Public Holidays) 9am ~ 9pm

Saturday (except Public Holidays) 9am ~ 1pm

Protect your family from online threats

Get your free SingNet Security Suite (Powered by **McAfee**) trial @

www.singnet.com/securitysuite

This service is applicable for residential customers only.